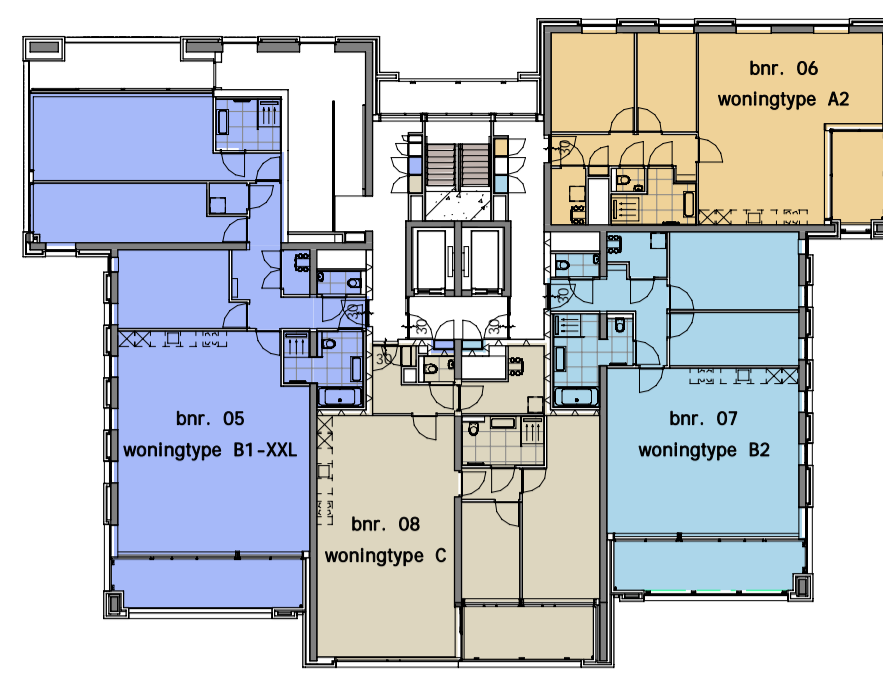
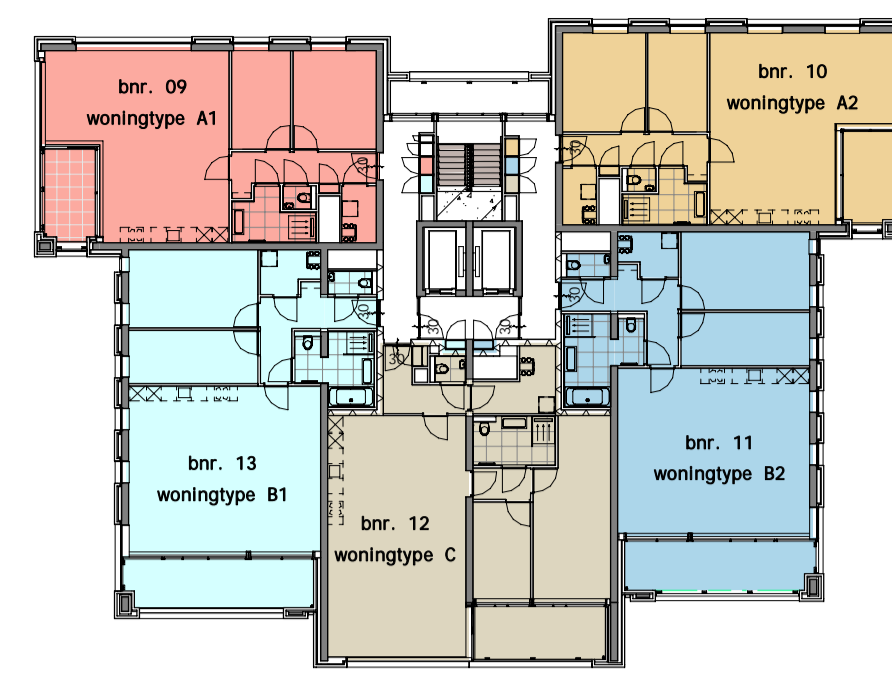


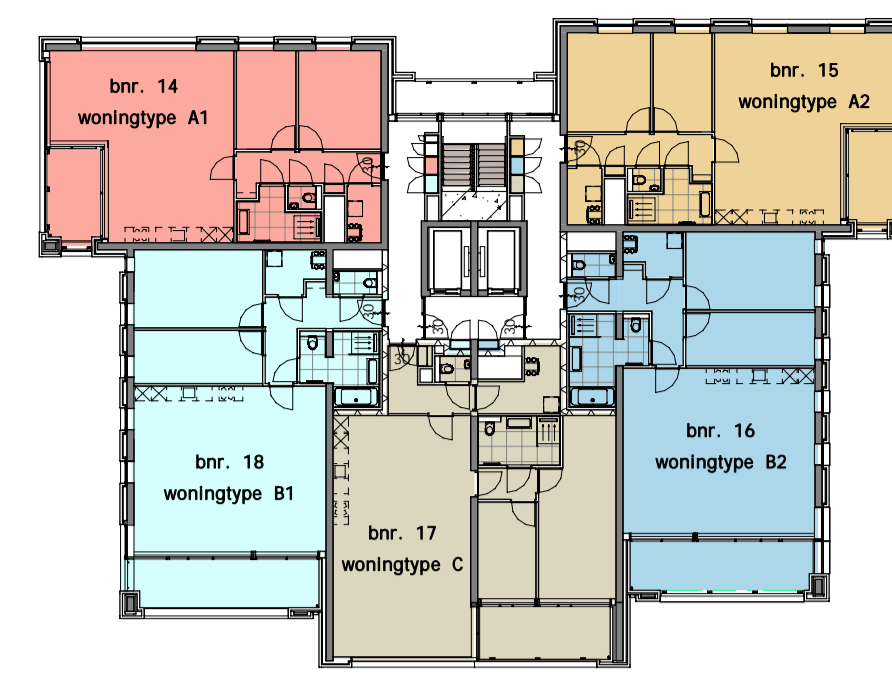
begane grond



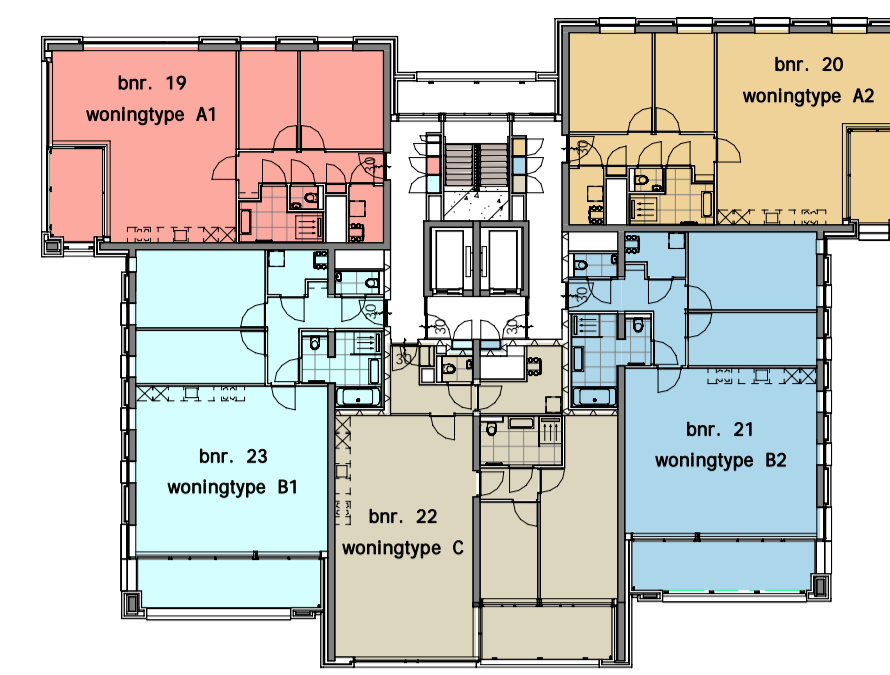
1e verdieping



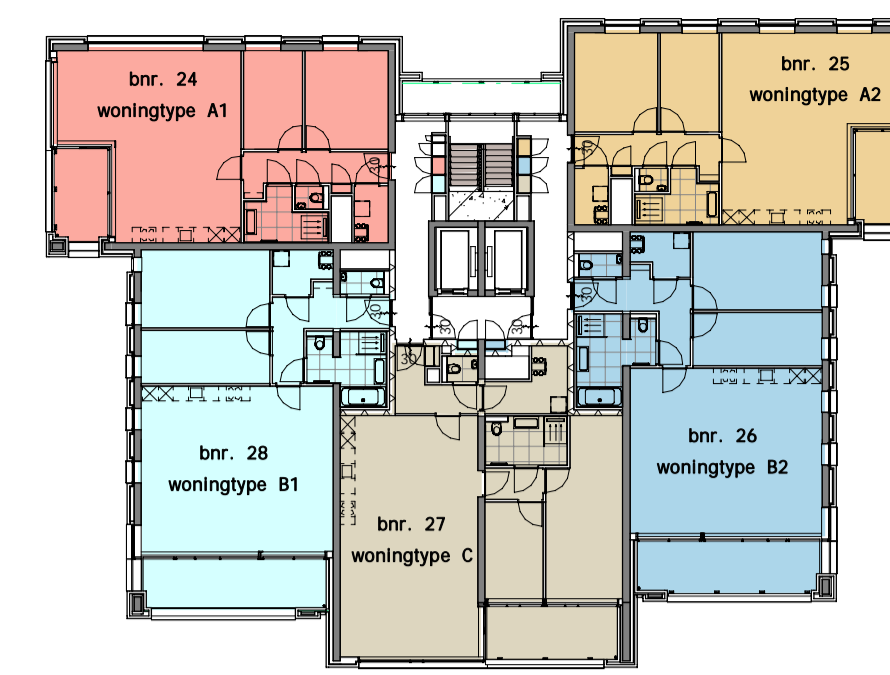
2e verdieping



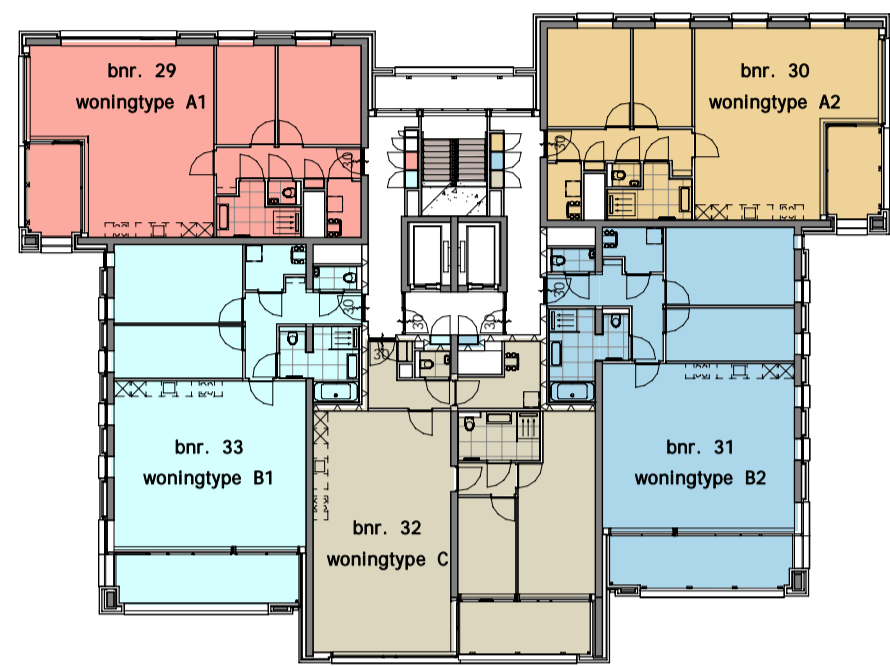
3e verdieping



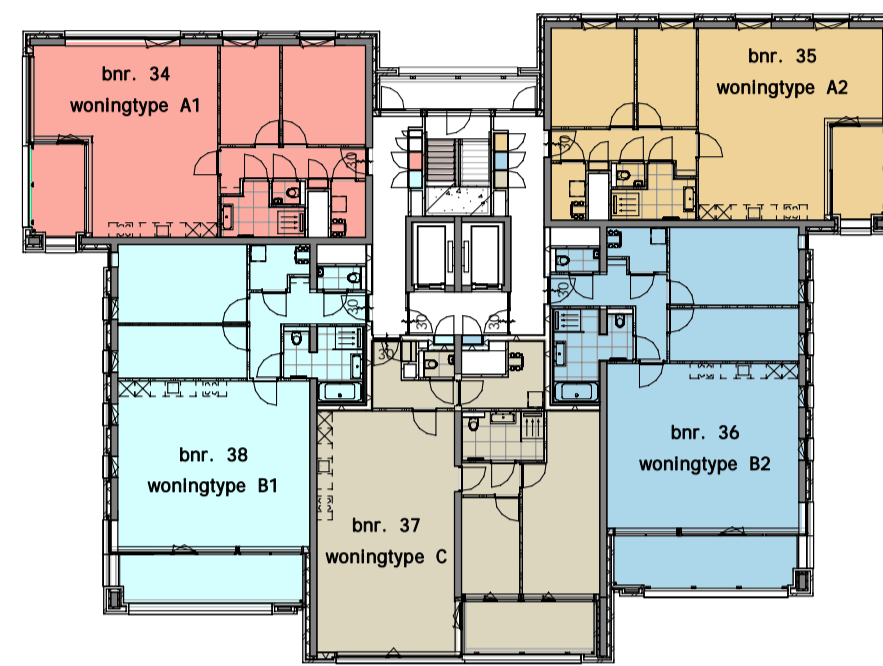
4e verdieping



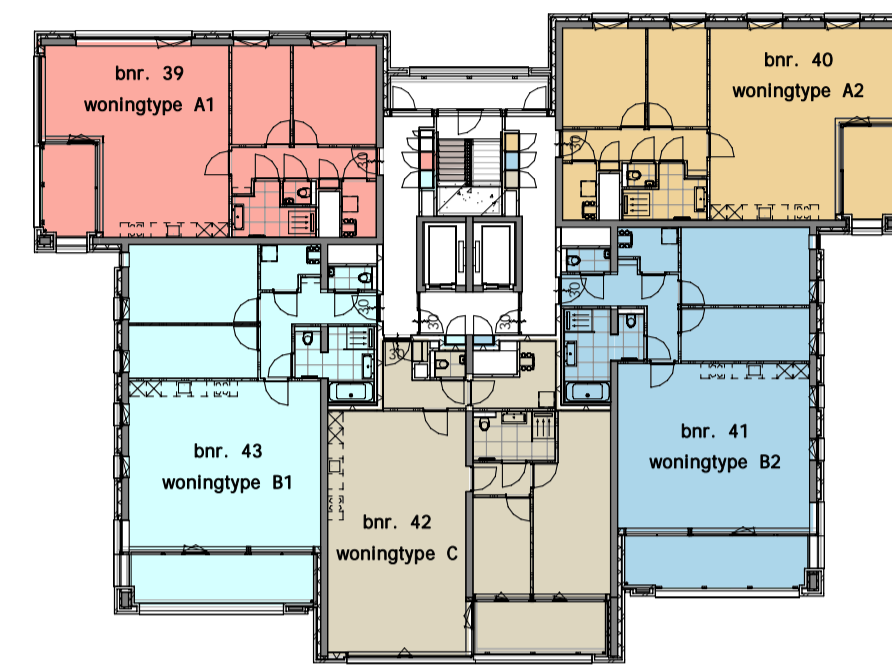
5e verdieping



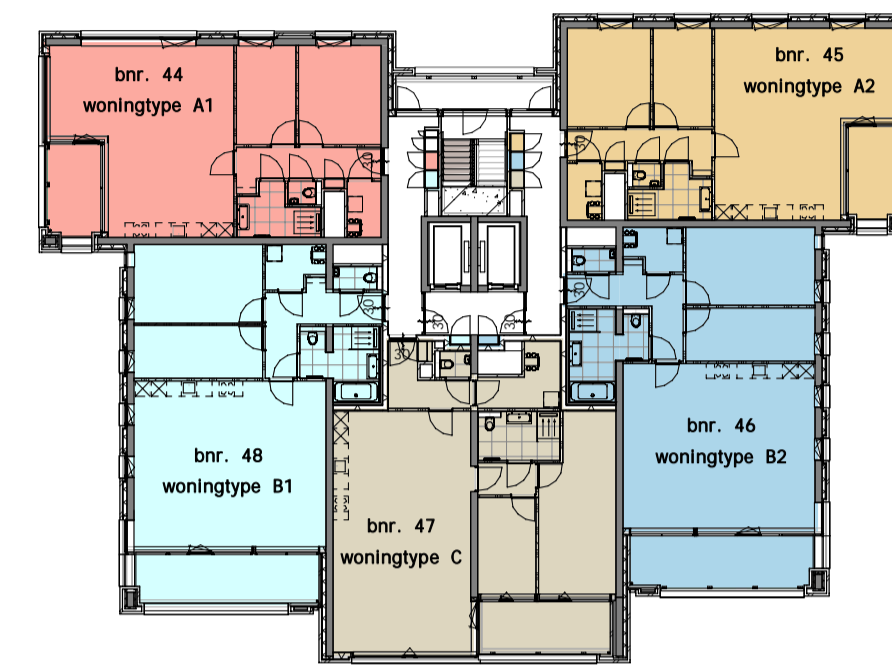
6e verdieping



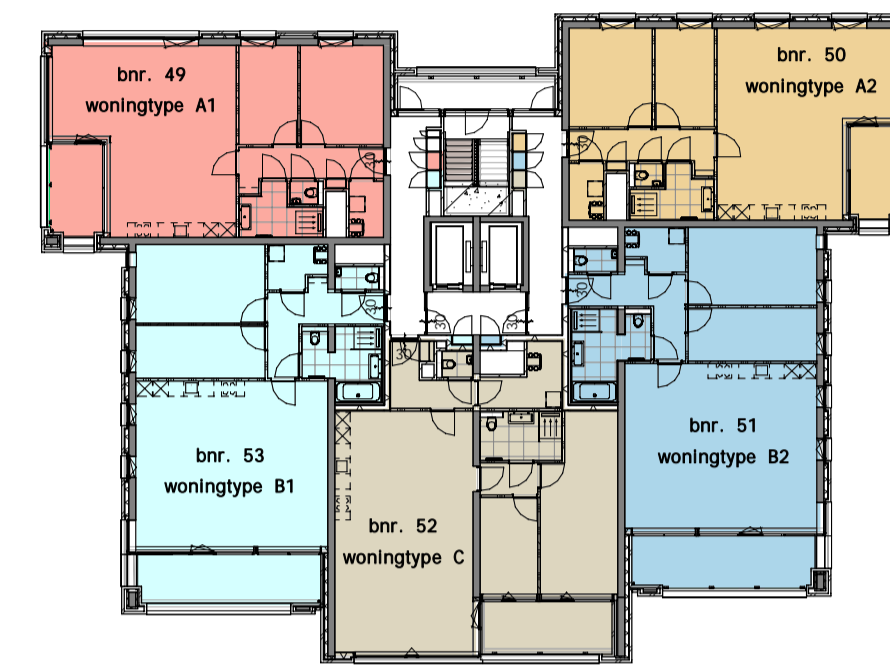
7e verdieping



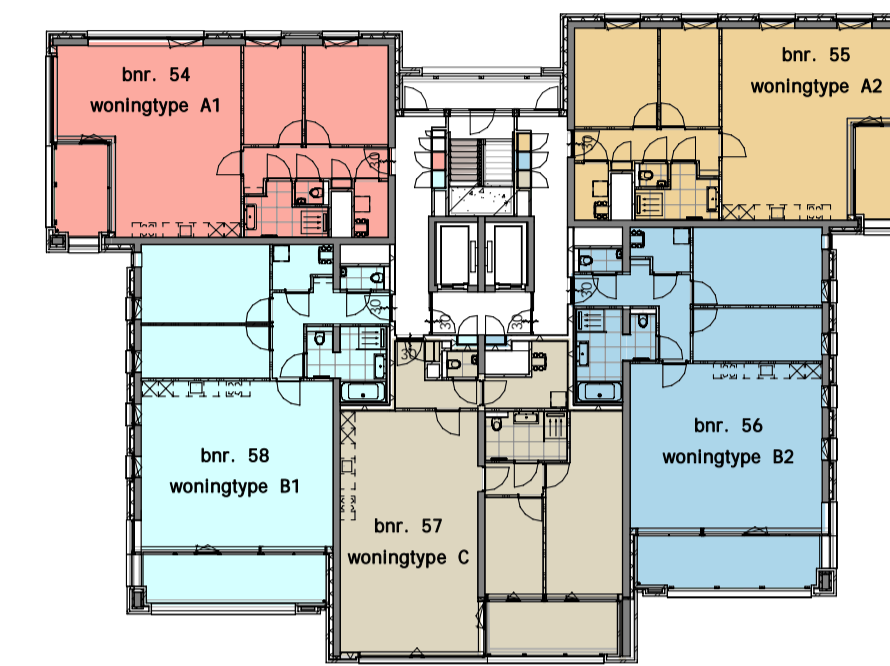
8e verdieping



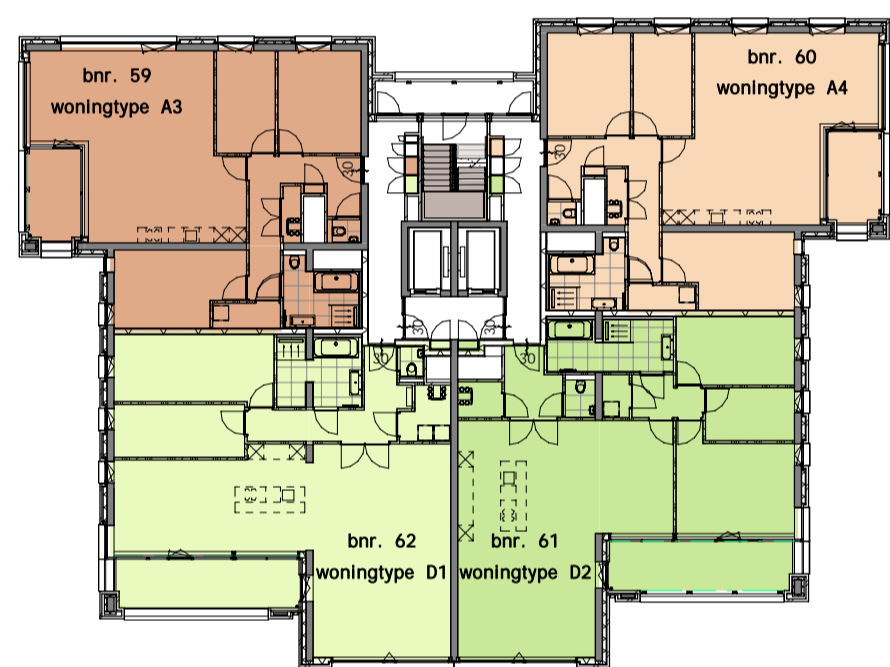
9e verdieping



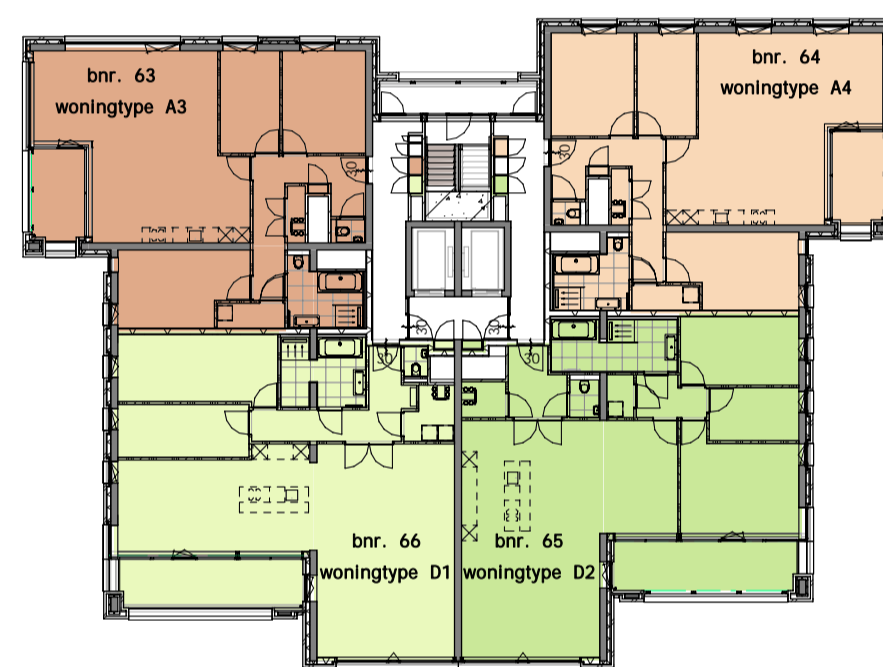
10e verdieping



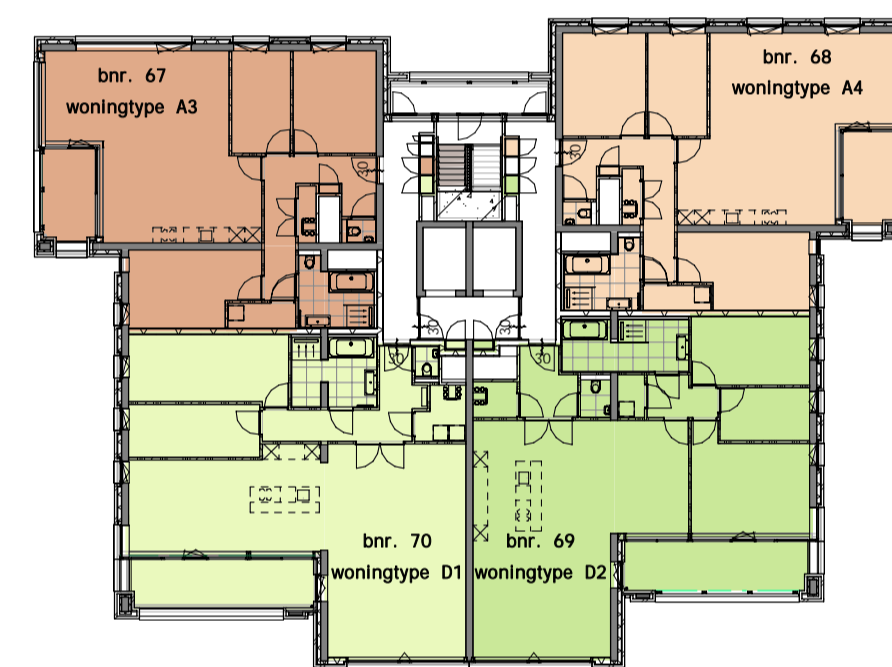
11e verdieping



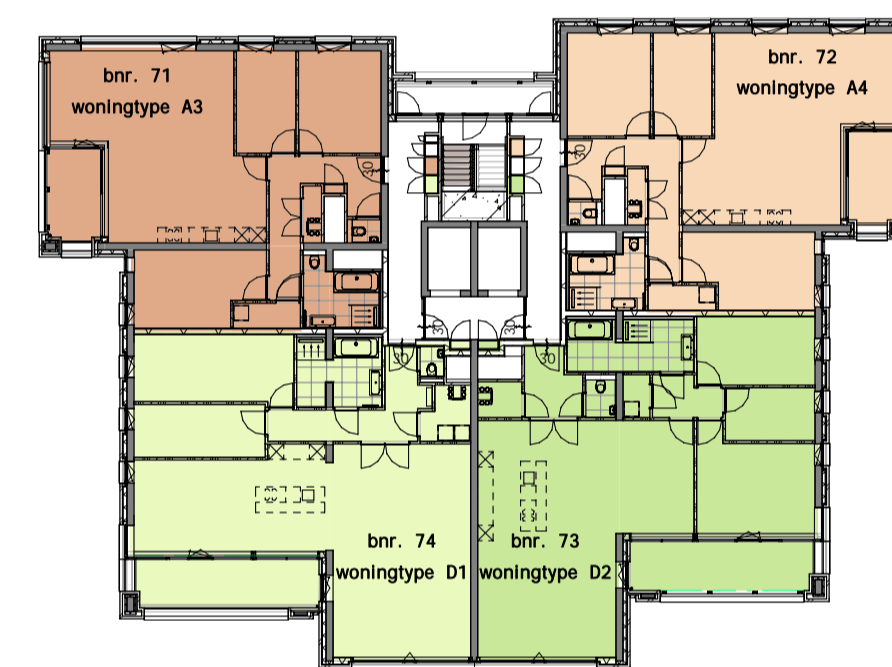
12e verdieping



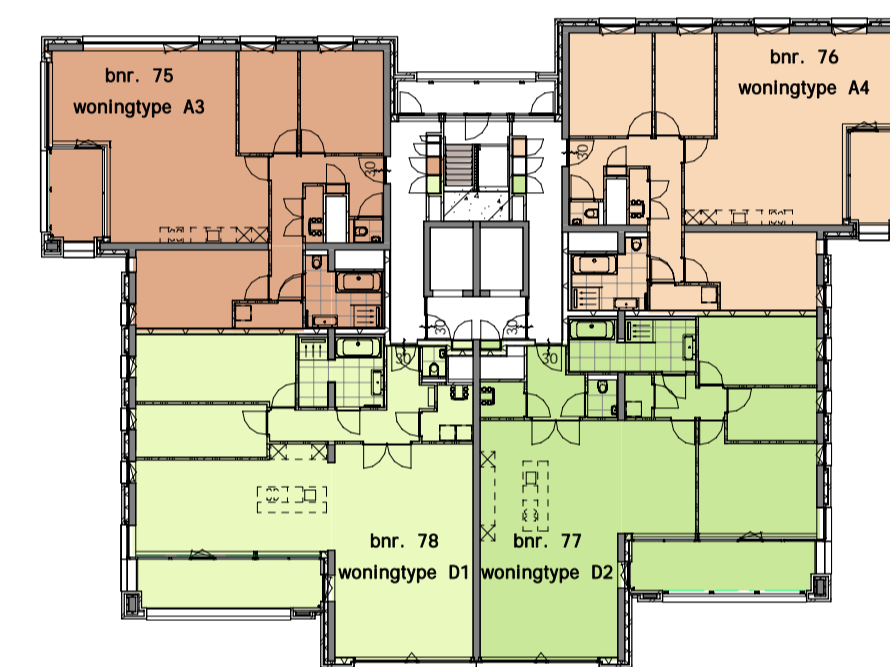
13e verdieping



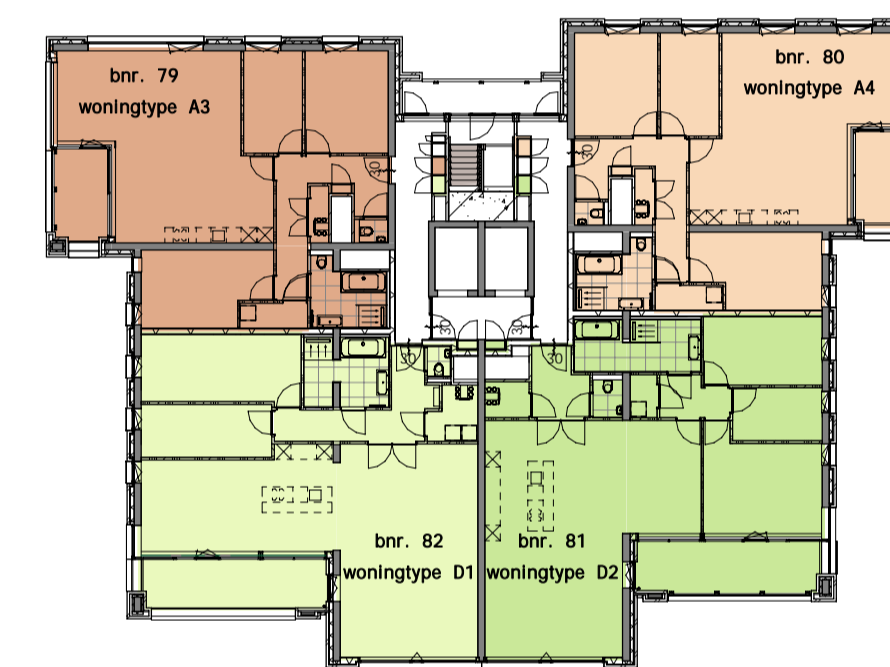
14e verdieping



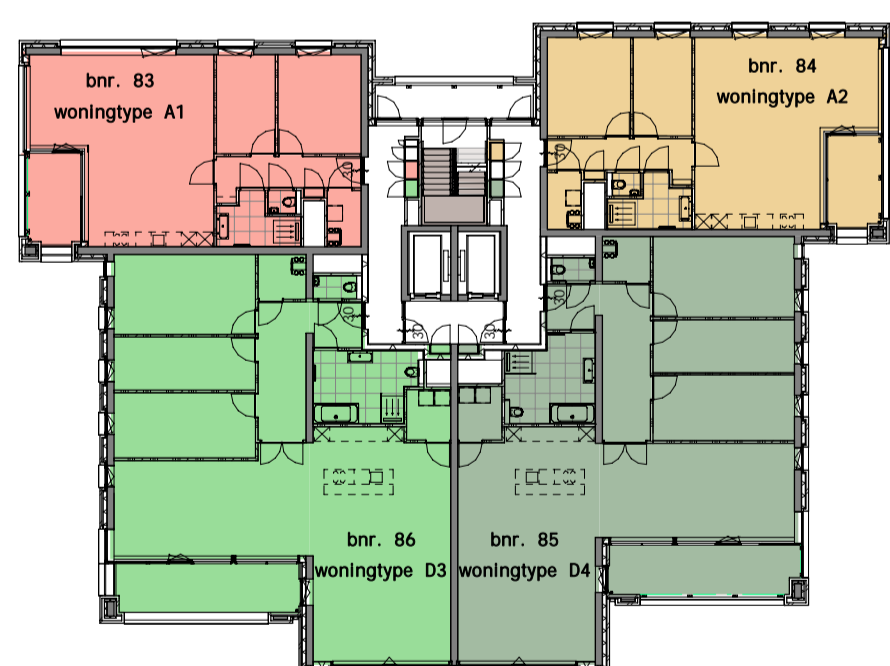
15e verdieping



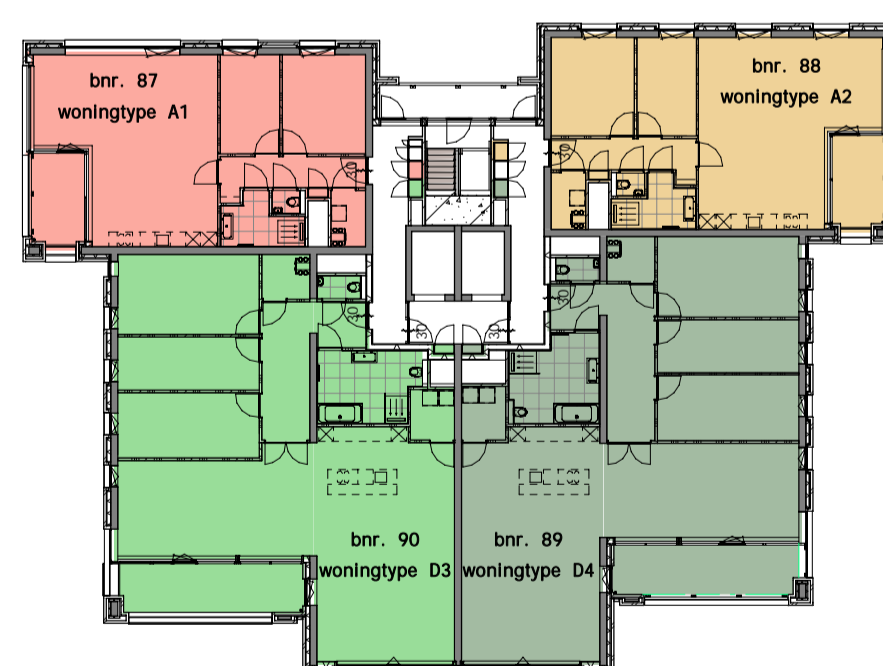
16e verdieping



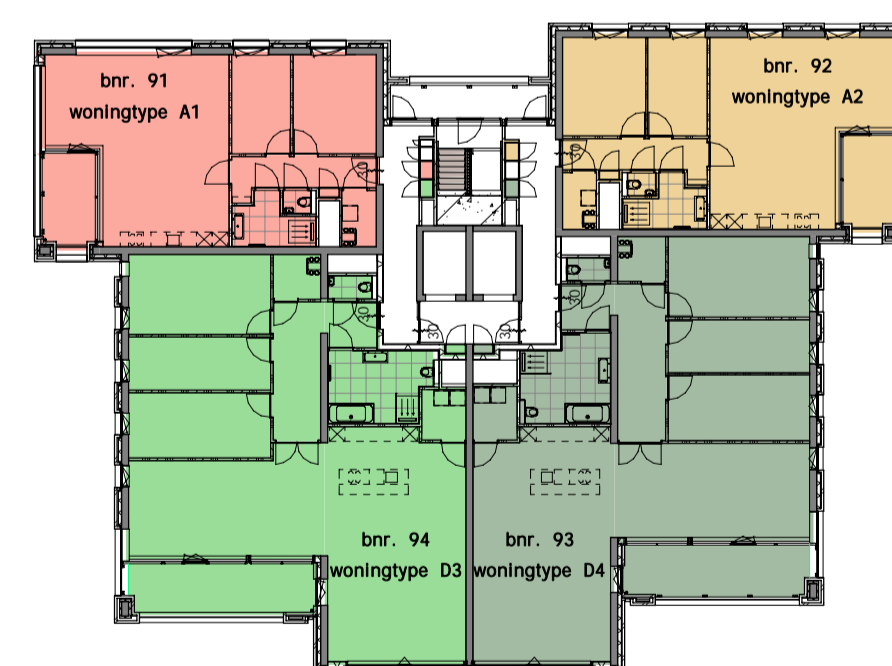
17e verdieping



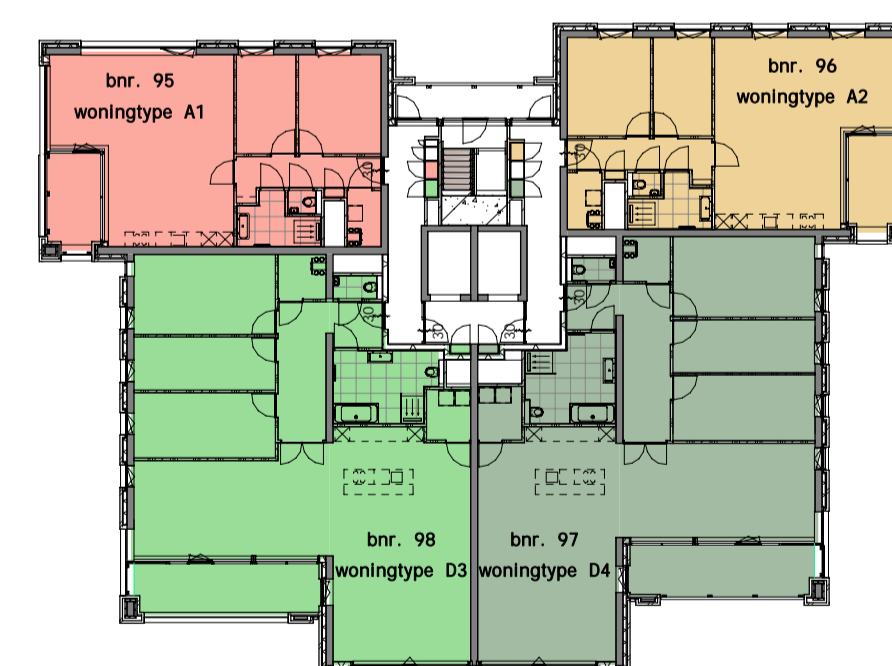
18e verdieping



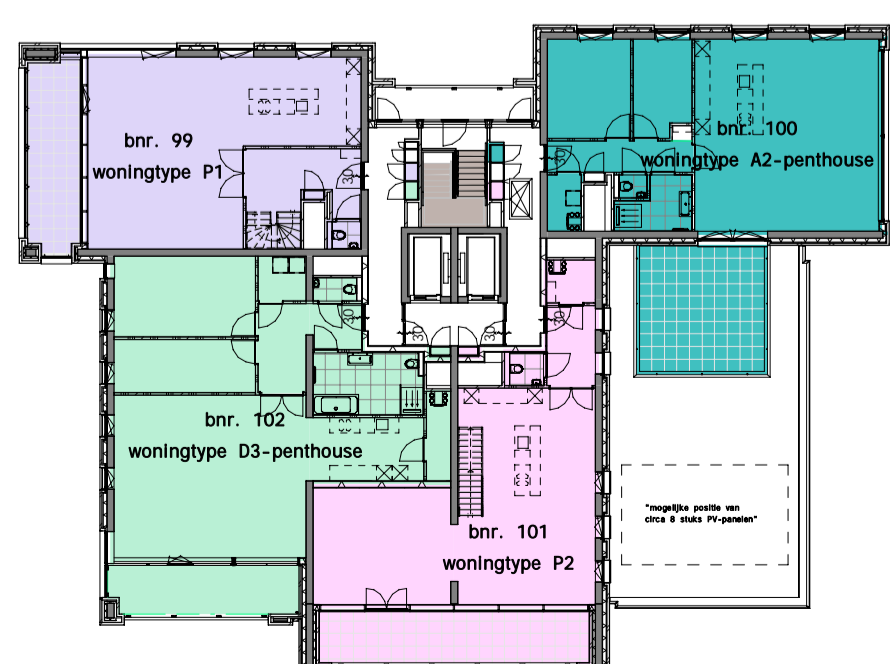
19e verdieping



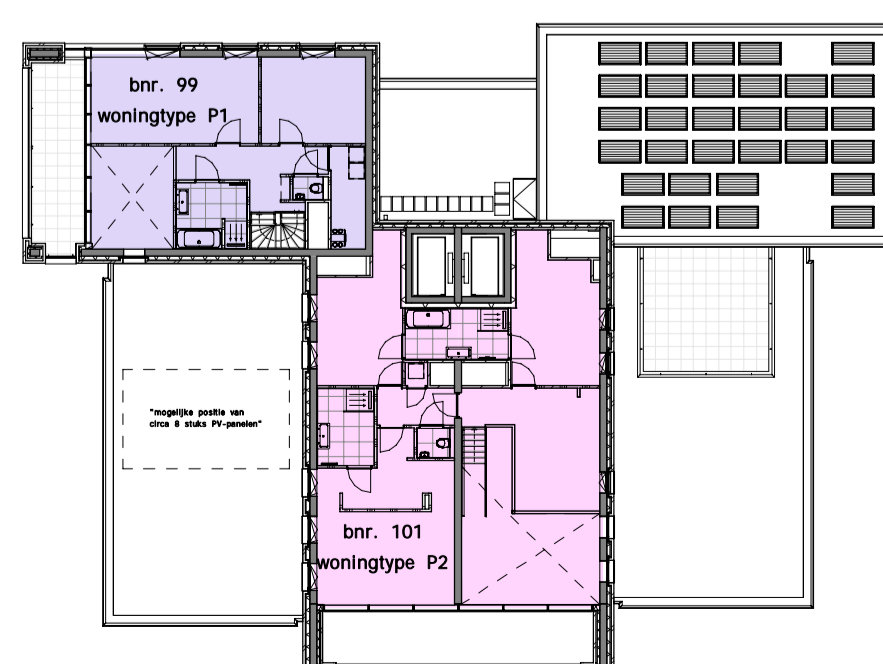
20e verdieping



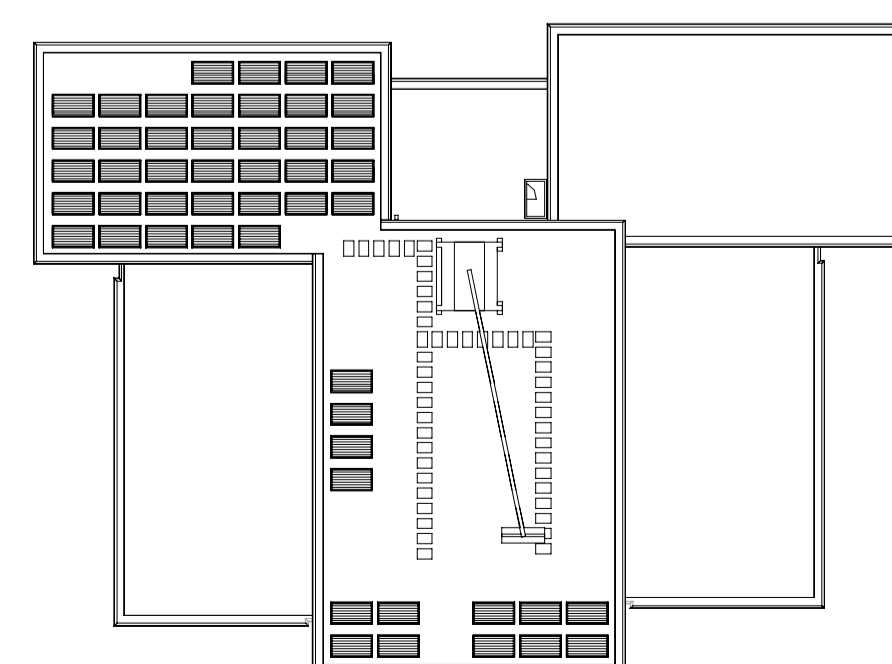
21e verdieping



22e verdieping



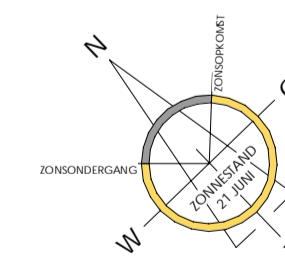
23e verdieping



Dakverdieping

Woningtypen:

- A1 : 14 appartementen
- A2 : 16 appartementen
- A2-penthouse : 1 penthouse
- A3 : 6 appartementen
- A4 : 6 appartementen
- B1 : 10 appartementen
- B1-XL : 1 appartement
- B1-XXL : 1 appartement
- B2 : 12 appartementen
- C : 12 appartementen
- D1 : 6 appartementen
- D2 : 6 appartementen
- D3 : 4 appartementen
- D3-penthouse : 1 penthouse
- D4 : 4 appartementen
- P1 : 1 penthouse
- P2 : 1 penthouse
- P2 : 102 appartementen



Architecten	ZECC Architecten / Klunder Architecten	Datum	26-01-2023
Gebouw	Almere Duin gebouw 12 PORTO	Ontwikkelaar	AMVEST
Tekening	Overzicht woningtype + bouwnummers	Aannemer	koopmans TBI
Bouwnummers			
Woningtype			
Schaal	1:300 (A1)		